



Jordbro Kulturhus

Jordbro Culture House

Mikaela Samuelsson

**Handledare/
Supervisor** **Tor Lindstrand & Anders
Wilhelmson**

**Examinator/
Examiner** **Anders Johansson**

**Examensarbete inom arkitektur, avancerad nivå 30 hp
Degree Project in Architecture, Second Level 30 credits**

10 June 2015





INTRODUCTION

THE CULTURE HOUSE

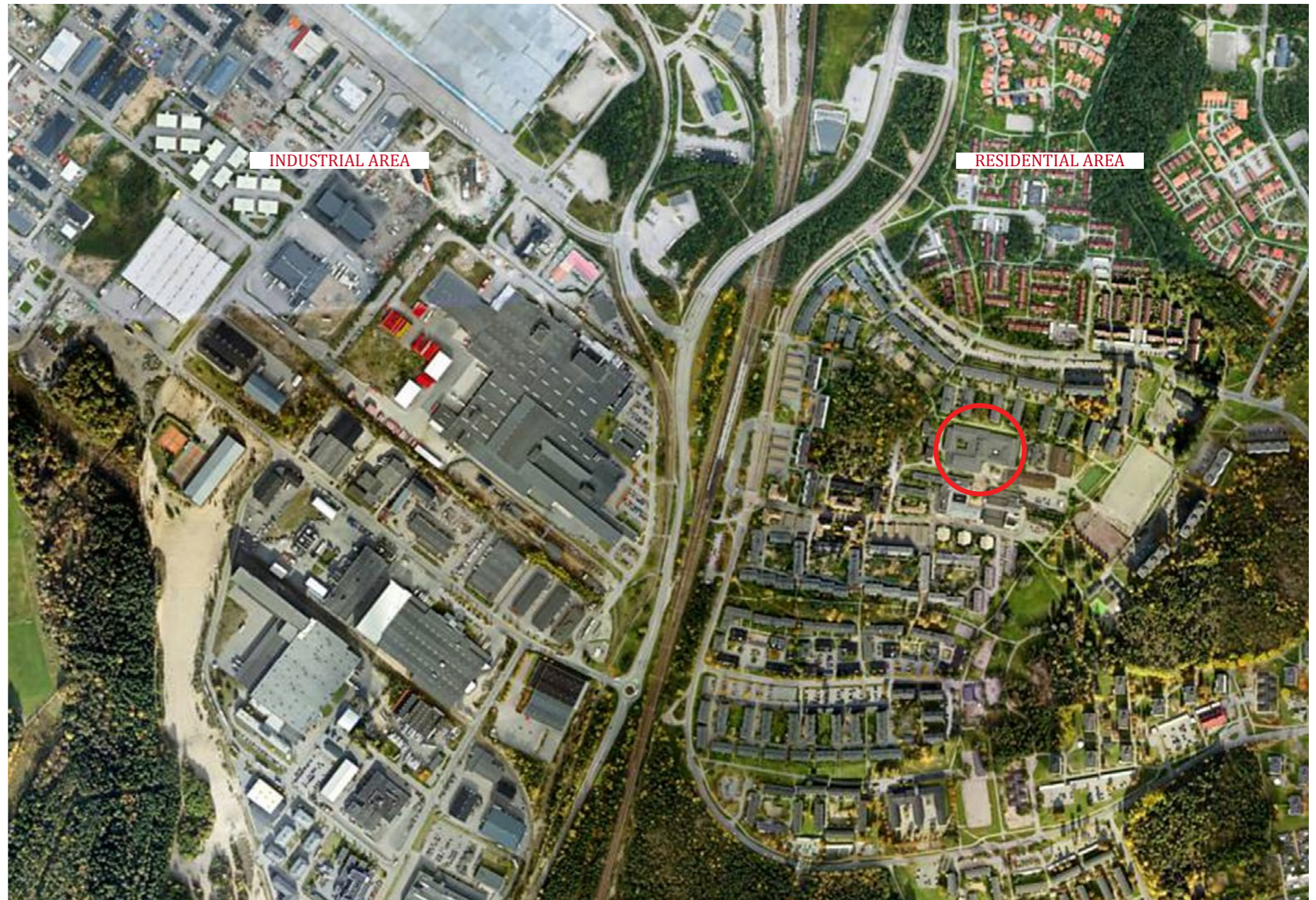
My diploma project is an adaptation of a former school building into a culture house. It all started with an interest in the old school building and the people fighting for it. I have been interviewing these fantastic people and digging up the history of the building. I hope with my knowledge of the potential and complexities of this place to suggest a durable development of the architecture and public life of the building.

My strategy has been to take advantage of existing qualities in the architecture of the building without being sentimental about it. This is not a restoration project. The most important thing for me has been to adapt the building to the program of a culture house in the context of Jordbro. I have reorganized the program in plan, revealed and added architectural layers. I have left some parts of the building intact which I think works fine and worked more with others.

STATEMENT

How can one use the structural system of an abandoned school and adapt it to a new program for culture and associations? Can this be done in a socially and economically sustainable manner?

How can culture work as an engine for public life in a dying million program era centre where commercial activities are not liable?



JORDBRO

Jordbro is a million program era housing area in the municipality of Haninge, approximately 20 km south east of Stockholm. It consists of an industrial area and a housing area that are separated from each other by a railway and a small but heavily used road. The area is surrounded with forests and fields which are separating it from other residential areas and infrastructure in Haninge. It takes 3 minutes with train to get to Haninge Centrum and 30 minutes to Stockholm Central Station.

The residential area consists of a row house area in the north with 2500 inhabitants and a multifamily housing area with 2-8 stories housing in the south with 8000 inhabitants. The center facilities of Jordbro are situated in the middle of the southern residential area, quite far away from the station.

A BRIEF HISTORY OF JORDBRO

The oldest traces of settlement in Jordbro dates back to the Stone Age. During the first half of the 20th century Jordbro was very scarcely populated. It largely consisted of forest and farmland.

After the Second World War the rural population in Sweden moved to cities to search

for new work opportunities. The demand for housing in Stockholm was constantly rising but there was a shortage of land to build on. This led to demands on the neighboring municipalities. Since Jordbro was strategically placed along the railway to Stockholm the municipal politicians saw it as a good place for development. In the late 50s the industrial area was developed. It was going to be a place for employment for the future inhabitants of Jordbro. In 1963 the first residential houses were built. The development continued into the 70s with additional housing and services such as a commercial center, two schools and an outdoor public bath. Both the industrial area and the residential area were designed by Eglers Stadsplanebyrå. Apart from some new housing built in the early 90s the city plan of Jordbro remains fairly intact.

DEMOGRAPHICS

Already in the 70s most of the million program era areas were heavily criticized in media for being alienating and inhumane sleeping cities. In Jordbro the inhabitants began to move out and over 500 apartments stood empty. Many people felt that it was too isolated and far away from Stockholm were most of the inhabitants were working. The people who moved to Jordbro after this were mostly people with low social and economic capital which led to a segregated area with socioeconomic declension. Today the multifamily housing area is the most socially and economically declined part of Jordbro.



MAP OF JORDBRO 1:2000

- IMPORTANT DESTINATIONS
- PUBLIC BUILDINGS
- IMPORTANT CONNECTIONS



INDUSTRIAL AREA

TRAIN STATION

BUS STATION

CHURCH

JORDBRO CULTURE HOUSE

JORDBRO GARDEN

SPORT HALL

FORMER YOUTH CLUB

SQUARE

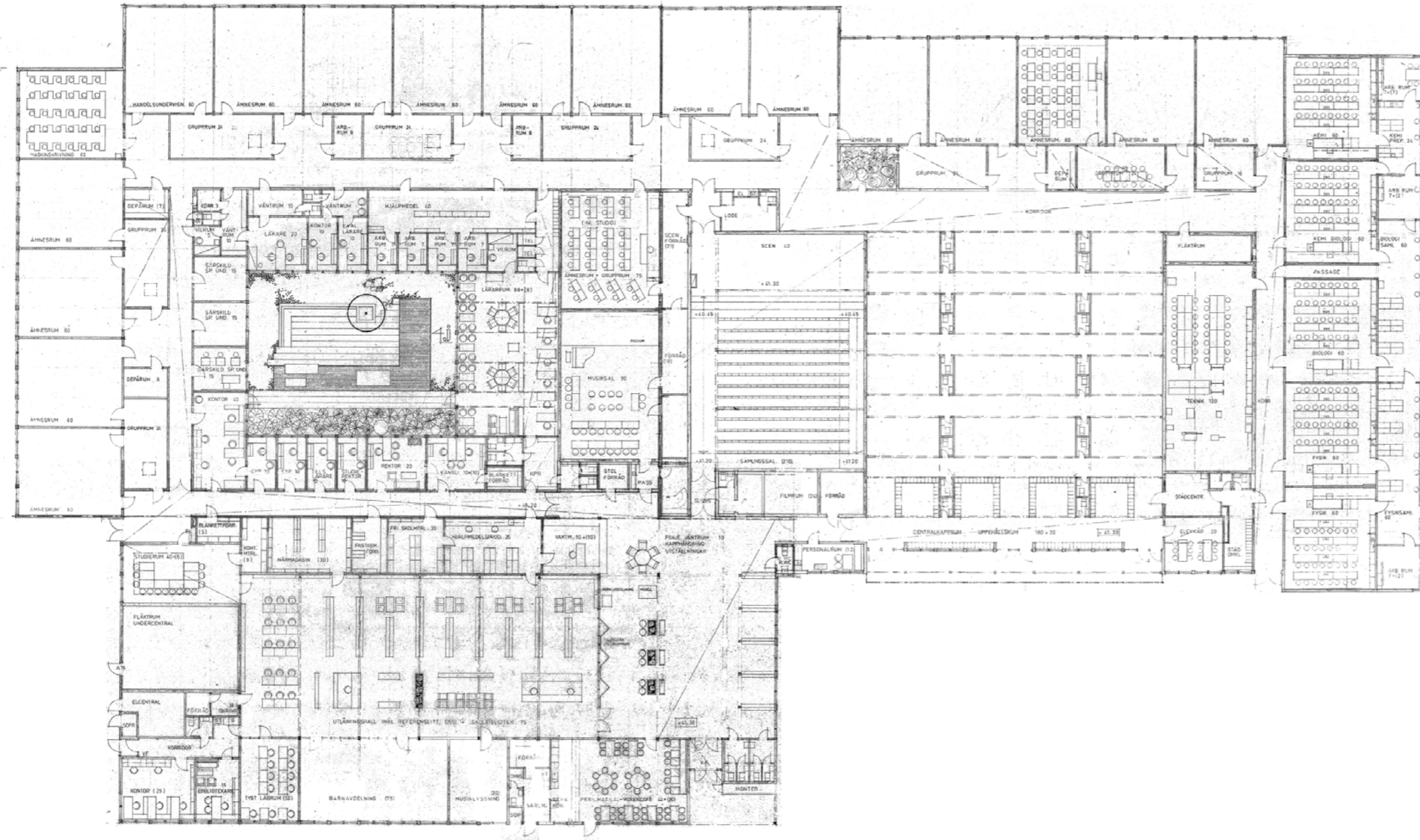
COMMERCIAL CENTER

SCHOOL

SOCCER FIELD

PARK

OUTDOOR BATH



Original plan by Gunnar Cedervall Arkitekter.



JORDBROMALMSSKOLAN

The former high school, Jordbromalmsskolan, is the site of this project. It was inaugurated in 1972 and designed by one of Sweden's leading architects of schools at the time, Gunnar Cedervall. It was placed in between the commercial center and the church because the architect wanted it to be used both as a school and a public service building. The school library was also a public library, the auditorium was used as a cinema and the teachers' canteen was also a café.

In 2009 the school was closed due to bad reputation and a loss of students that followed after the free school choice. This was met by protests from the citizens who felt let down by the municipality. The municipal government decided for the school to be demolished and replaced by new dwellings. The motivation for this was that it would boost the dying commercial center of Jordbro which is owned by a venture capitalist firm who has stated that they will not renovate or put money into the center unless they get more potential customers in the area.

In 2012 while waiting for a final decision on demolition of the school the municipality allowed cultural associations in Jordbro to move in on a temporary lease and Jordbro Culture House was founded. Immediately it became a well-used platform for culture

in Jordbro that did not exist in an organized form before. The cultural workers and the citizens began the fight to save the school from demolition. In December 2014 after a two year struggle the new social democrat government of Haninge decided not to demolish the school.

JORDBROBARNEN

Jordbro is known in Sweden from a series of nine documentaries made by filmmaker, Rainer Hartleb. Hartleb followed a class of children who grew up in Jordbro from 1972, when the first film was made, until 2014. In the second film, *Leva i Jordbro* (To live in Jordbro), that was filmed between 1975-81 the children studies at Jordbromalmsskolan. I have used the film to get an idea of how the school looked and worked when it was new.

EXISTING SPATIAL PROGRAM

The spatial program of the school is typical for the ideals of usage in the 70s. The large scale of the building has made it possible for the organizations to find and create spaces of their own in the building. Many parts of the buildings spaces and materiality have large potential of being reused within the new program but it is also much characterized as a school. The many corridors and identical classrooms make it hard to orientate and it shuts the activities off from the center of Jordbro.

The interior structure of the building is its most notable architectural character. The load bearing system consists of glulam columns and beams and the walls between are either brown brick or white plaster. All windows, doors and original furniture are varnished pine wood. Almost none of the interior walls that are load bearing which makes it possible to remove them to create larger spaces.



The library.



The foyer.



The café entrance from the foyer.



The auditorium.



Jordbro Världsorkesters studio.



Former chemistry classroom.



Rehearsal room.



Damaged ceiling in the youth club reveals the glulam beams.



The west courtyard.

"We should have a house council where the municipality doesn't have majority. Today it's hard for the free organizations to get their ideas through."

- Lennart Abrahamsson, Jordbro United

"It's easy to get free culture groups to come and work at Jordbro culture house. It would be cool if we could provide them with studios and workshops."

- Göran Lidbrink, Jordbro Världsorkester

"We need to have a long term concept of defining different surfaces in the house. We also need to find a balance between working in private and addressing the public."

"It would be nice to use the ground around the house better."

- Camilla Thorn Wollnert, Kultur- & Fritidsförvaltningen

"We would like to do something with the courtyard. Maybe we could build a glass roof over it, like a greenhouse!"

- Thina Sparr, Ung 137

THE PEOPLE I MET

INTERVIEWS

I have interviewed active people at the culture house to hear about the pros and cons with the building and what their wishes for the future are.

ORGANIZATIONS AT JORDBRO CULTURE HOUSE

There are 13 organizations in the culture house today, about half of them are run by the municipality and half of them are free cultural organizations.

KULTUR- & FRITIDSFÖRVALTNINGEN HANINGE SYD

The municipal Culture and Recreation department for southern Haninge has their administration and offices at the culture house. They administrate the other municipal organizations like the youth club and the library. Camilla Thorn Wollnert is head of the department.

UNG 137 YOUTH CLUB

Ung 137 is a youth club for children over the age of 12. In their new space at the culture house they get a larger hang-out and reception space, a glazed court yard, a sport hall and several smaller rooms for different activities. Thina Sparr is the manager of the club.

JORDBROGÅRDEN

Jordbrogården is a youth club for young people between 12-21 years old with mental disabilities. They are located in the building east of the culture house. They help the janitor at the culture house with different tasks and guide visitors who come here. They also perform with Jordbro United.

THE LIBRARY

The old school library is run as a public library by the municipality.

HANINGE MUSIKSKOLA

The municipal school for teaching music has their lessons at the culture house in afternoons and evenings. They also have performances here.

MILJÖVERKSTAN

Miljöverkstan works with sustainable education for the public and for school children through different projects. They have an indoor workshop and a city garden at the culture house. In my project I also created a conservatory for them to grow plants in.

JORDBRO UNITED

Jordbro United is a dance and show studio for children and youths. They have around 300 members who come to the culture house for practice every week. They also use the auditorium for shows. JU is run by Lennart and Lina Abrahamsson. Lennart also arranges a flea-market on Saturdays at the square in front of the culture house.

JORDBRO VÄRLDSORKESTER

JVO (Jordbro World Orchestra) is a music and performing arts association for adults who gather people locally and globally to work on different cultural projects. They have offices and rehearsal space at the culture house and they use the foyer and auditorium for performances and concerts. JVO is run by Göran Lidbrink.

BLÅ VÄGEN

Blå Vägen is a social company who works with rehabilitating and getting unemployed people back to work. They have a crafts studio at the culture house.

KREMIMA

Kremima is a company who recycles material for preschools. They get leftover material from different companies, clean it and adapt it for preschool children. They have their workshop, storage and office at the culture house.

ALL CONTINENTS JORDBRO

AC Jordbro is a non-profit sports organization that works with sports development in suburbs. They aim for a social and cultural sustainability and equality in sports. They use the sport facilities in Jordbro and a small office space at the culture house.

JORDBRO STADSTEATER

Jordbro Stadsteater (city theatre) is a free theatre group that has held some shows in the foyer and auditorium at the culture house. 2012 they run a play that criticized the participatory dialogues that has been held to deal with development of Jordbro and the future of the culture house.

VÄGEN UT

Vägen Ut is a music studio and a social association for youths organized by Studieförbundet Vuxenskolan and the association Vi Unga. They have several music studios at the culture house and arrange concerts in the foyer and auditorium. Cissi Karlsson runs the studios.

DEMOKRATIVERKSTAN DIGNITAS

Dignitas is a think tank who works with strengthening democracy and solidarity in Jordbro. They have their office at the culture house and organize different events in Jordbro.



JORDBRO UNITED



BLÅ VÄGEN



JORDBRO VÄRLDSORKESTER



KREMIMA

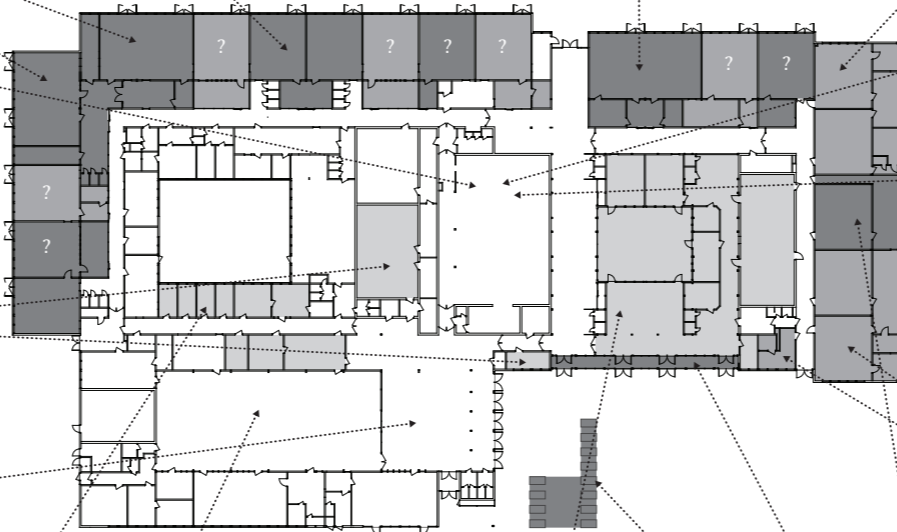


ALL CONTINENTS JORDBRO

DEMOKRATIVERKSTAN DIGNITAS



HANINGE MUSIKSKOLA



? = Empty workshops for new organizations.



JORDBRO STADSTEATER



DIALOGUE FORUM

JORDBROGÅRDEN



FLEAMARKET



UNG 137 YOUTH CLUB

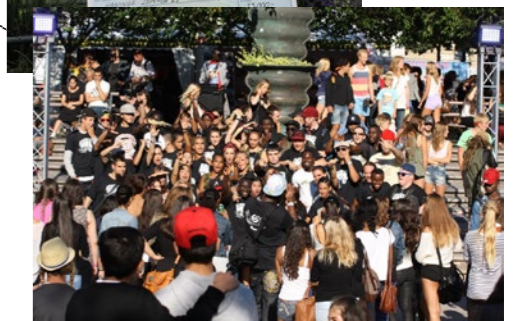
KULTUR- & FRITIDSFÖRVALTNINGEN HANINGE SYD

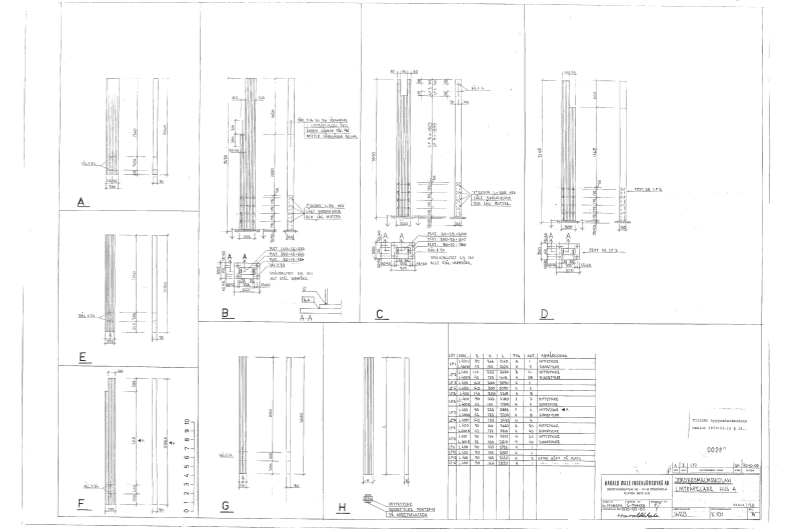
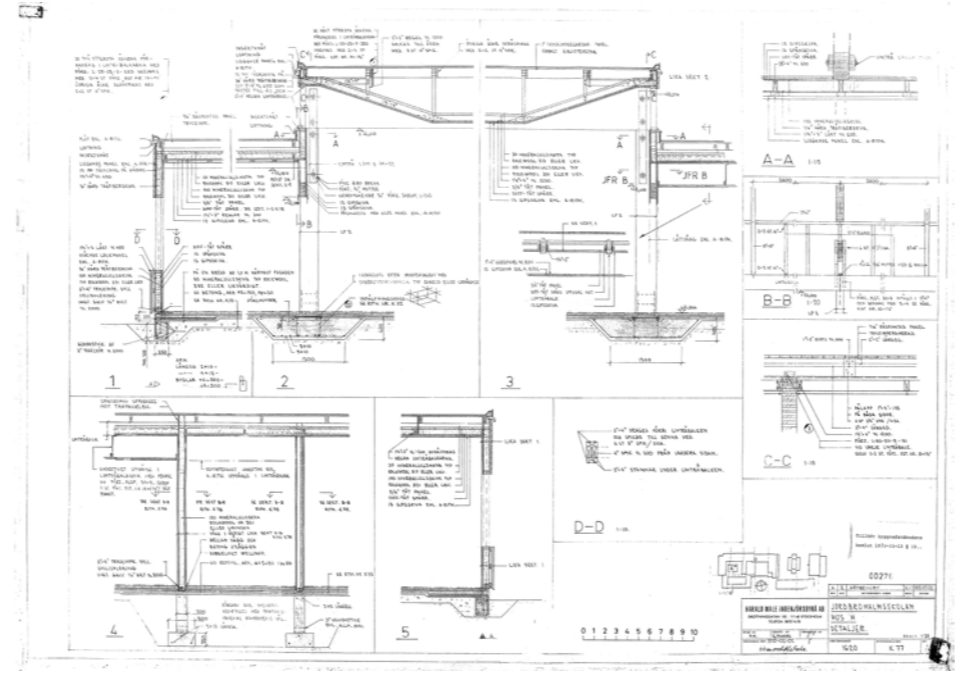
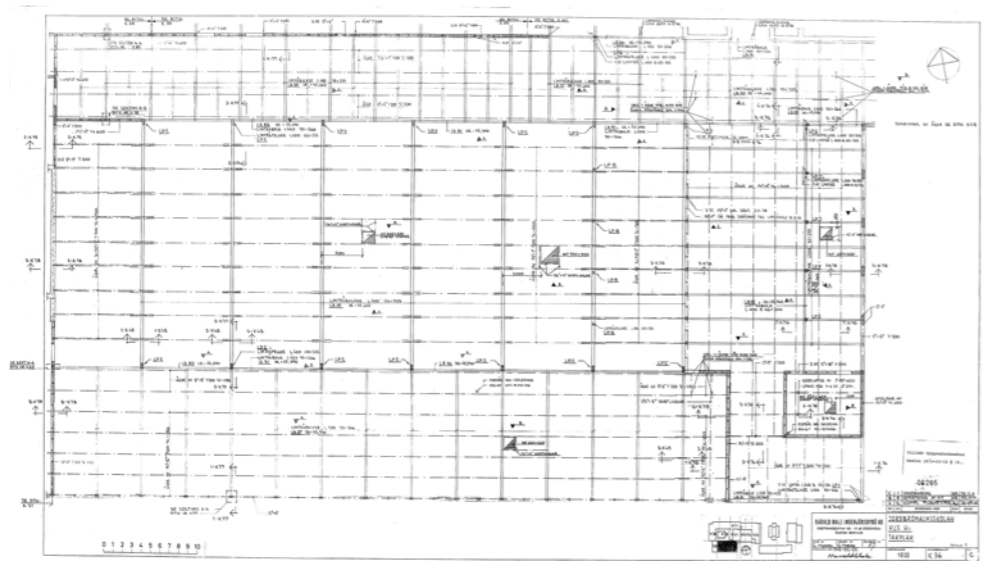
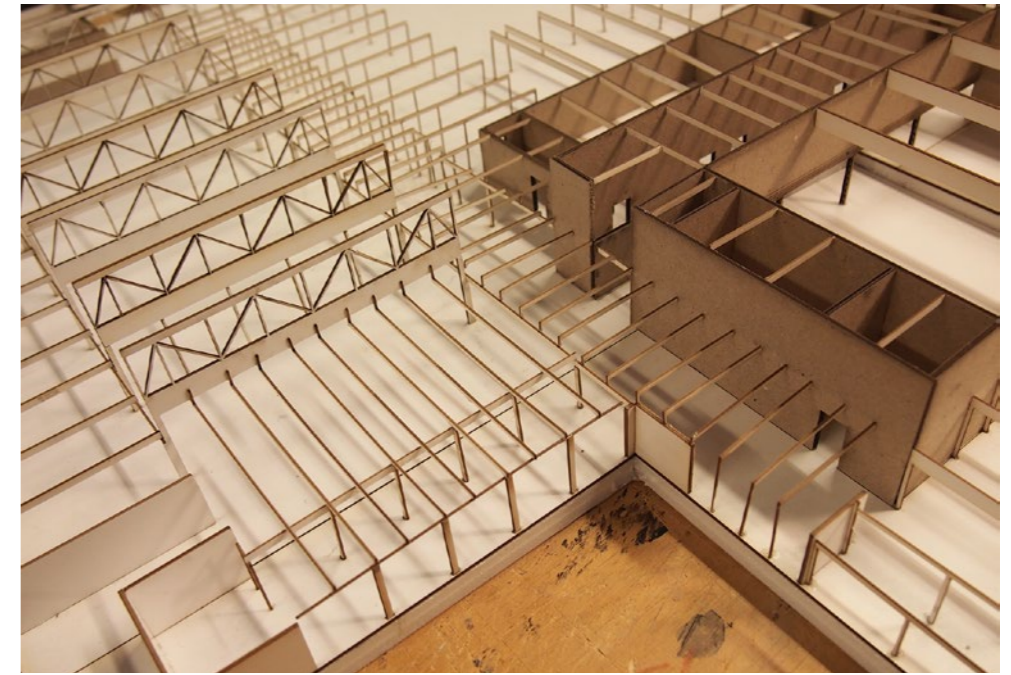
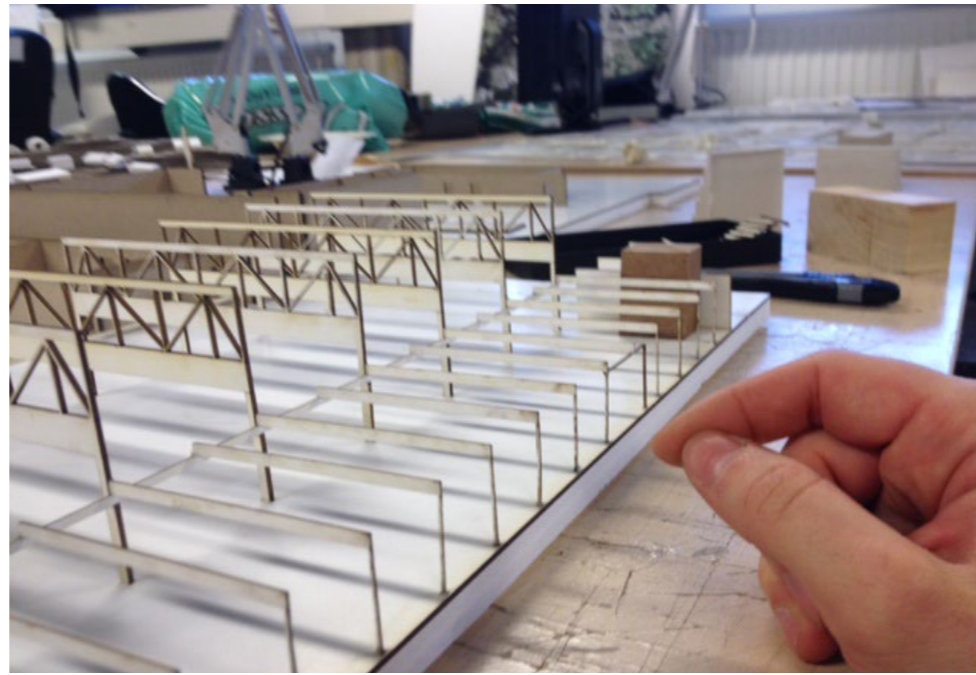
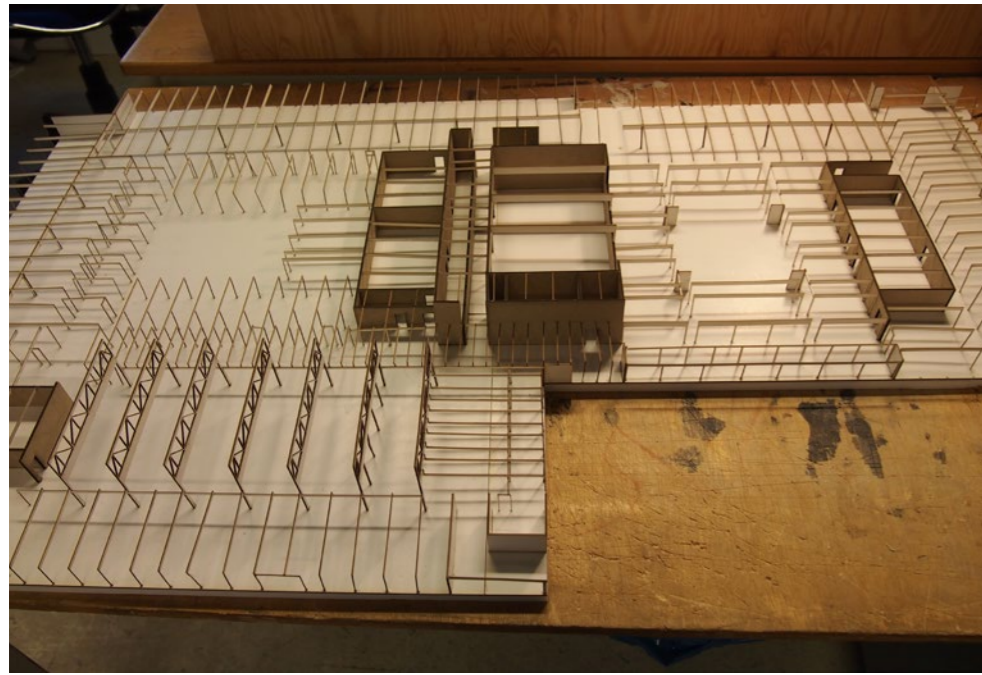


MILJÖVERKSTAN



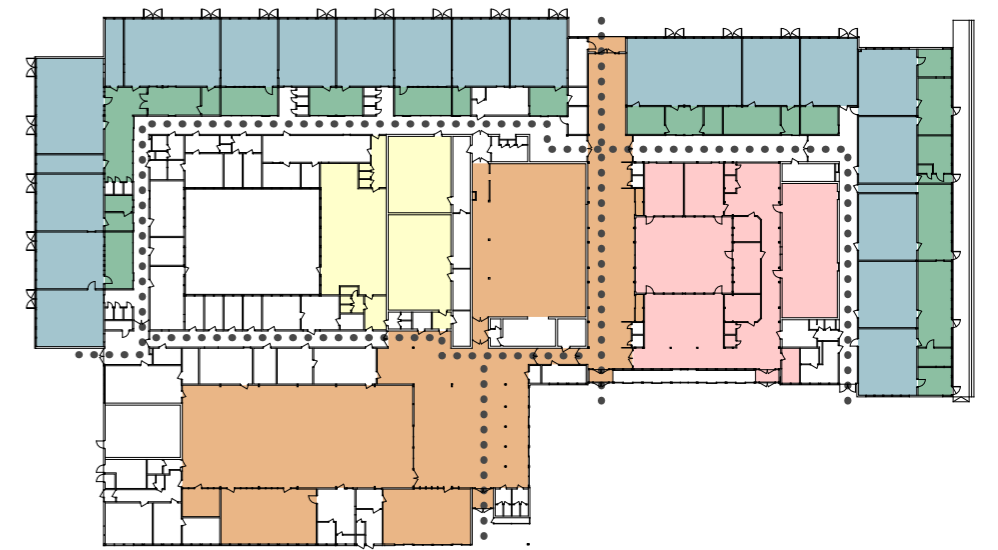
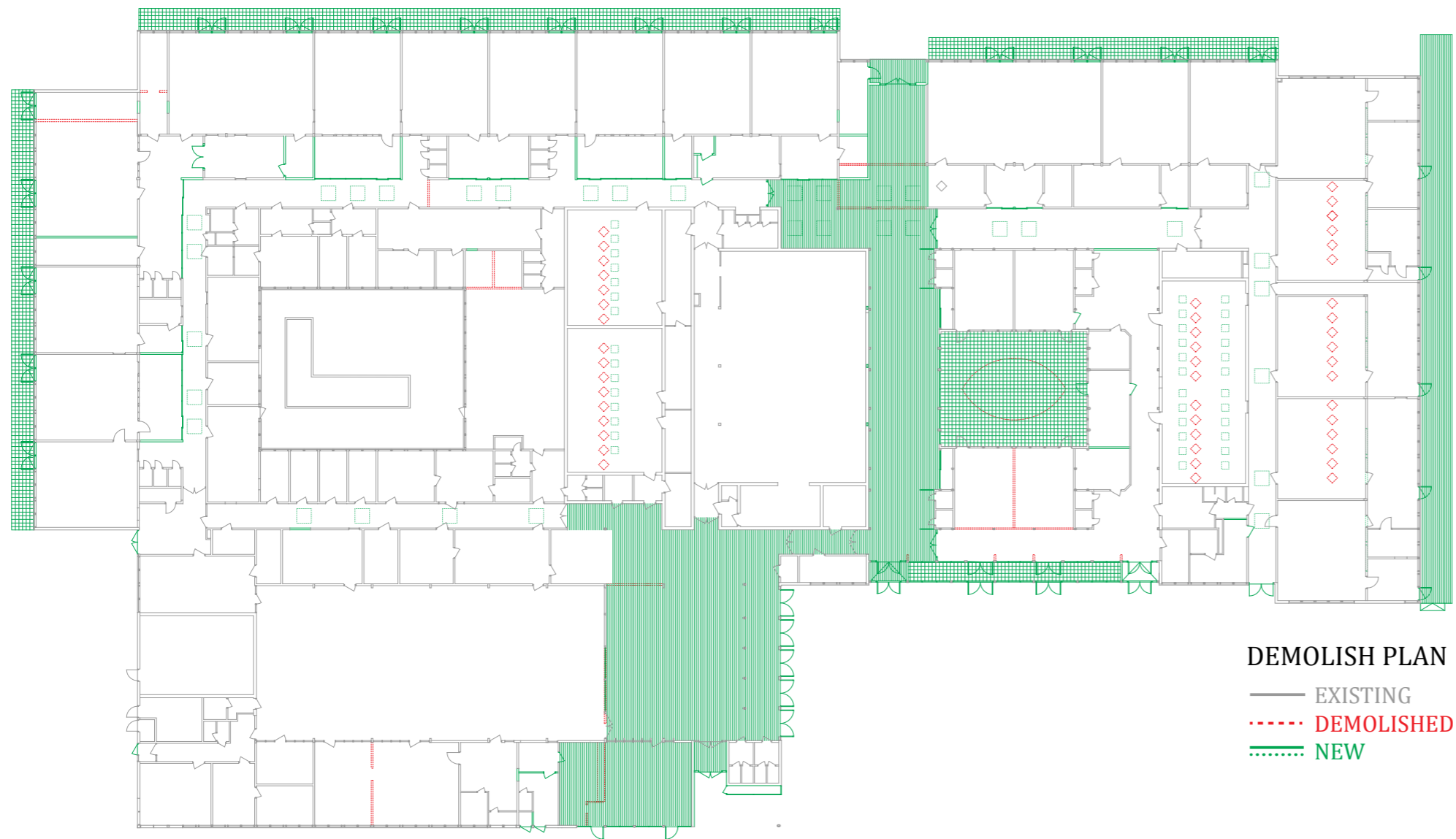
VÄGEN UT





STRUCTURE

I have gone through original drawings, investigated and revealed the structure of the building which is made by glulam columns and beams. By making a model of the structure I could understand the flexibility and spatial qualities of the building which has been hidden throughout the years underneath new ceilings and cladding. In my proposal I have revealed the structure by removing the low ceilings and placing ventilation, acoustic wood wool and lighting fixtures between the beams.



REORGANIZING THE PROGRAM

The spaces and functions I have been focusing on are entrances, communication, the café, the foyer, the youth club, workshops for cultural organizations, the facade and the roof.

I also suggest an administrative change to the program. Today the municipality decides who gets to use the space and what to do with it. For the culture house to last and be vivid for a long time I think it is important to give more freedom to the free cultural organizations. The municipality could still own the building but rent it out to a house council that consists of the cultural organizations.

PROPOSAL



SITEPLAN 1:400 (Original 1:100)



Foyer proposal above and current situation below.



Café proposal above and current situation below.



North-south corridor proposal above and current situation below.

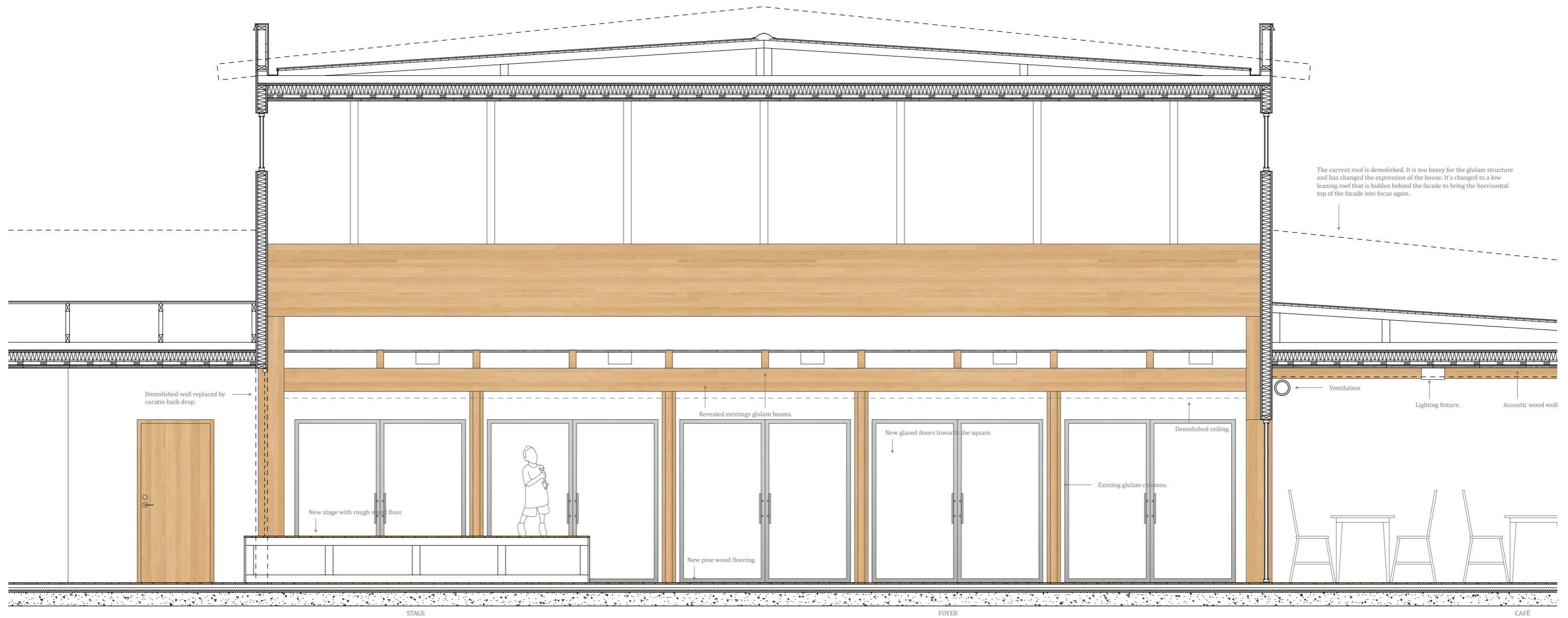


PUBLIC SPACES

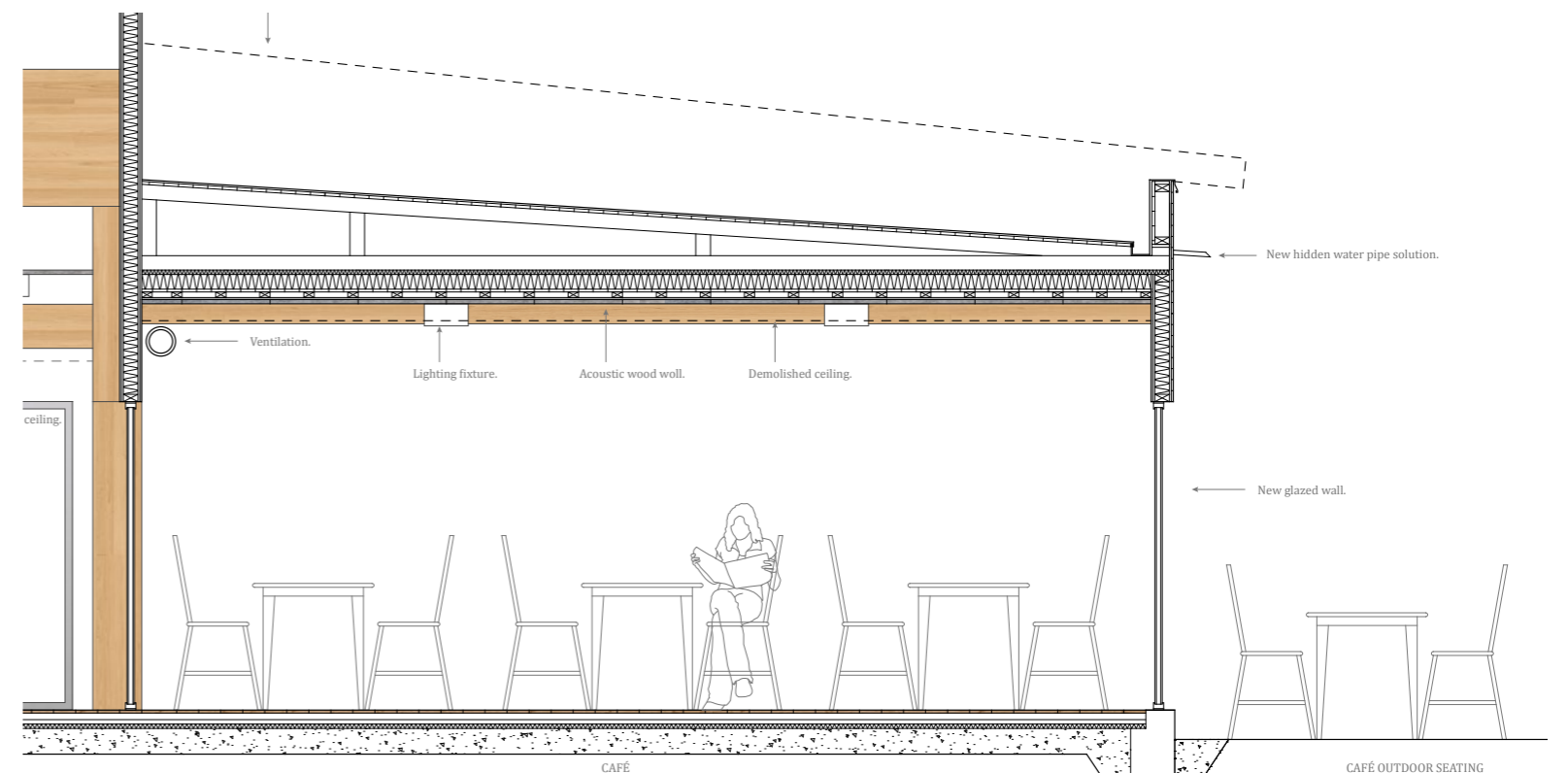
The public spaces I have worked with are the foyer, the café and a new passage through the building which I call the north-south corridor. I have left the auditorium and the library as they are since they work very well already. The foyer, café and north-south corridor gets new rough wooden flooring and the entrances gets a similar wooden cladding to create a visual link between the public spaces throughout the building. The foyer and the café gets new glazed doors to bring in light and create a possibility for activities to spill out.

The café gets a larger and better equipped kitchen were the entrance to the library is today. The library gets a larger entrance from the foyer instead.

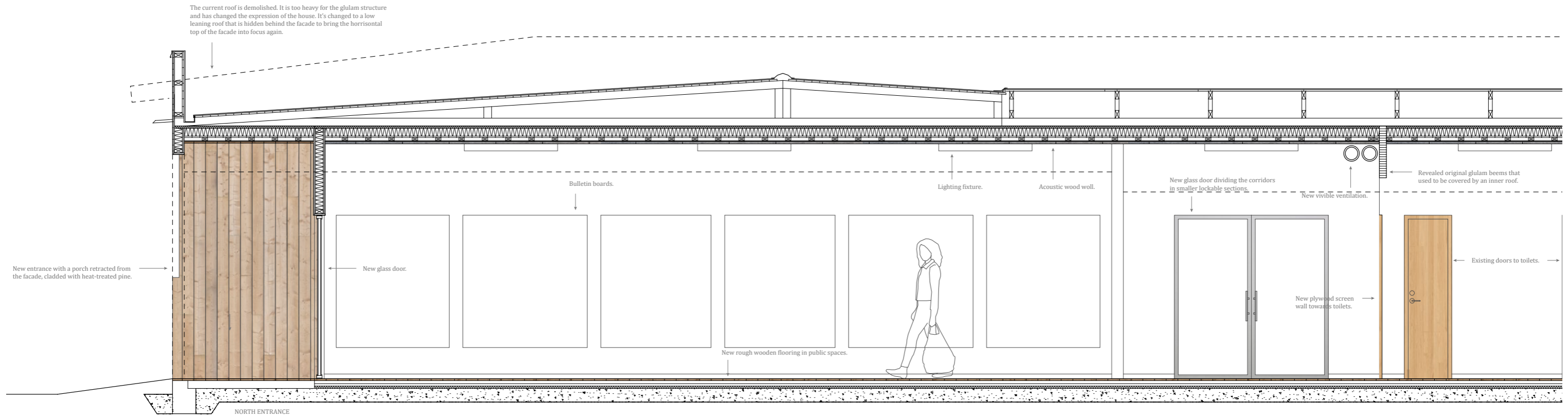
The north-south corridor is created by tearing down the walls of one of the classrooms at the north side and moving the youth club from the corridor to a more defined space. This new link gives the building an entrance directed to the residential area on the north side and a quicker passage to the center facilities.



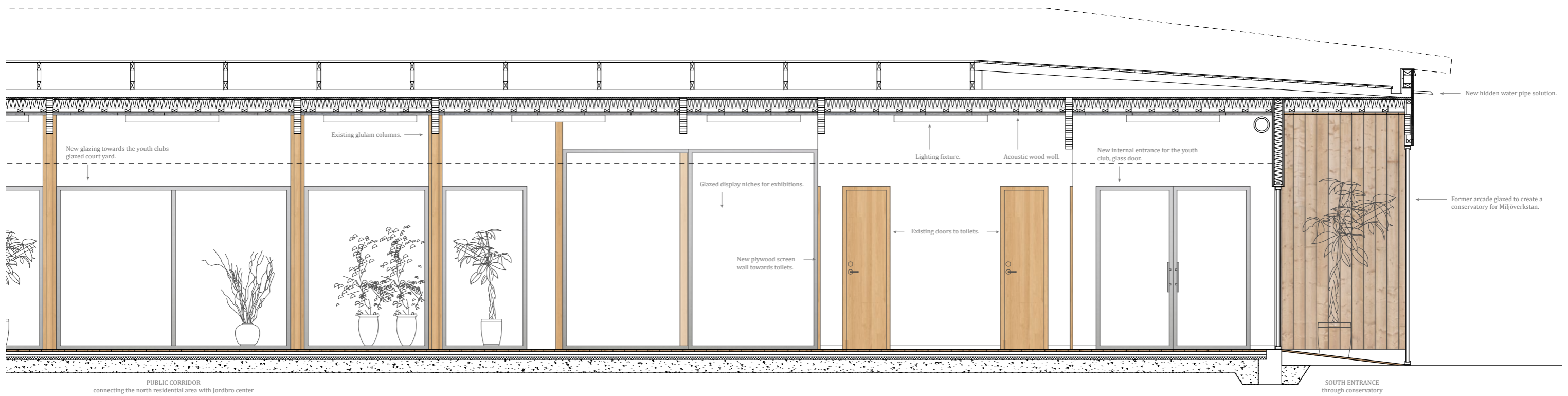
Part of Section A showing the foyer 1:50 (Original 1:20)



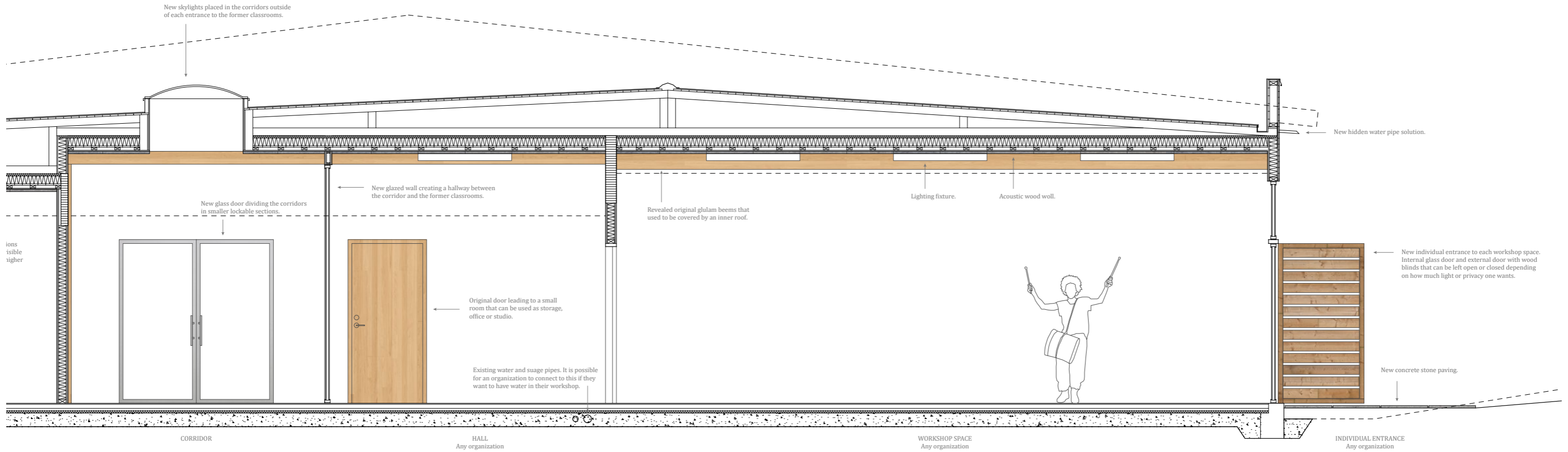
Part of Section A showing the café 1:50 (Original 1:20)



Part of Section B showing the north-south corridor 1:50 (Original 1:20)



Part of Section B showing the north-south corridor 1:50 (Original 1:20)



Part of Section C showing a corridor and a workshop 1:50 (Original 1:20)

WORKSHOPS AND STUDIOS

The former classrooms are today used as workshops but many of them are empty or used to store old school furniture. In my proposal each workshop gets an entrance from the outside to enable loading. The entrance consists of an inner glazed door and an outer wood door with some distance between the planks to bring in light. The cultural workers can use these double doors to change the level of privacy in the workshops. Each workshop also gets a new entrance from the internal corridors by glazing the wide pockets that exists today and creating a small hallway. A small storage or studio space are linked to the hallway.

COMMUNICATION

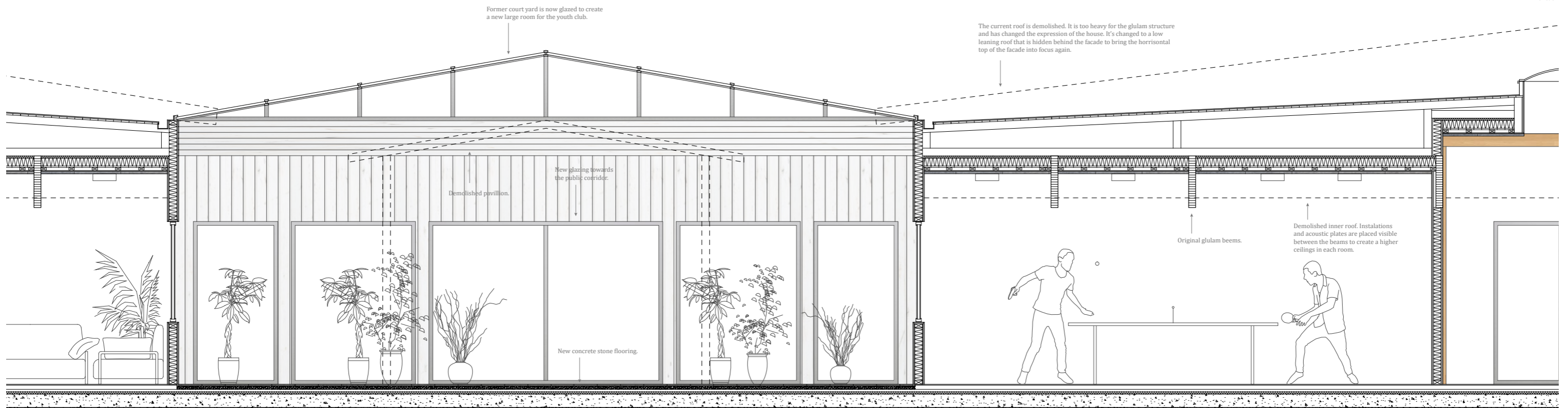
The corridors are opened up where they are blocked by activities and narrowed to create entrance spaces for the workshops. Skylights are added above each workshop entrance.

Typical corridor.



Classroom used to store old school furniture.





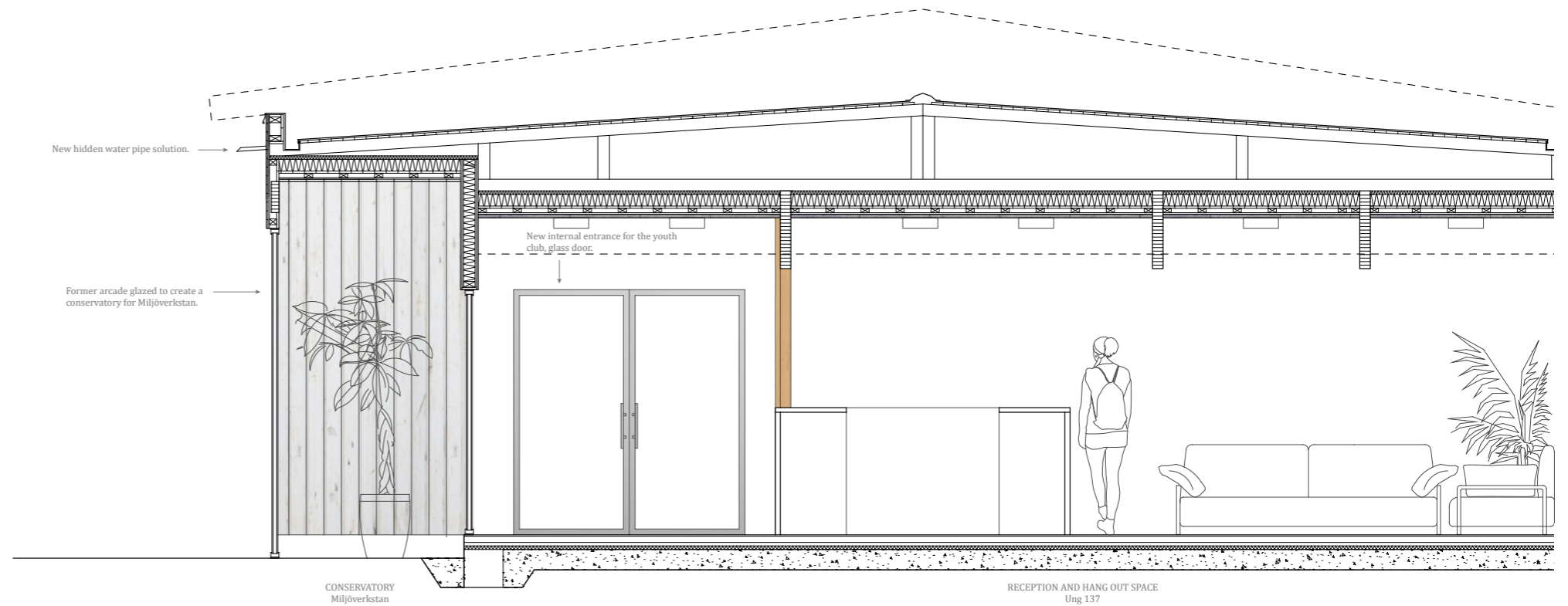
Part of Section C showing the youth club 1:50 (Original 1:20)

GREEN HOUSE
Ung 137

POOL AND GAME ROOM
Ung 137



Proposed court yard with glass roof above and the court yard today below.



Part of Section C showing the conservatory and the youth club 1:50 (Original 1:20)

YOUTH CLUB

The youth club, Ung 137, is today spread out over a large part of the building. This makes it hard to know where the youth club ends and the culture house starts. I have reorganized the youth club around the east court yard which is glazed in to give them an extra room.

CONSERVATORY

The former arcade is glazed in to create a conservatory for the organization Miljöverkstan.



Exterior perspective of proposed changes to the facade and former school yard.

EXTERIOR

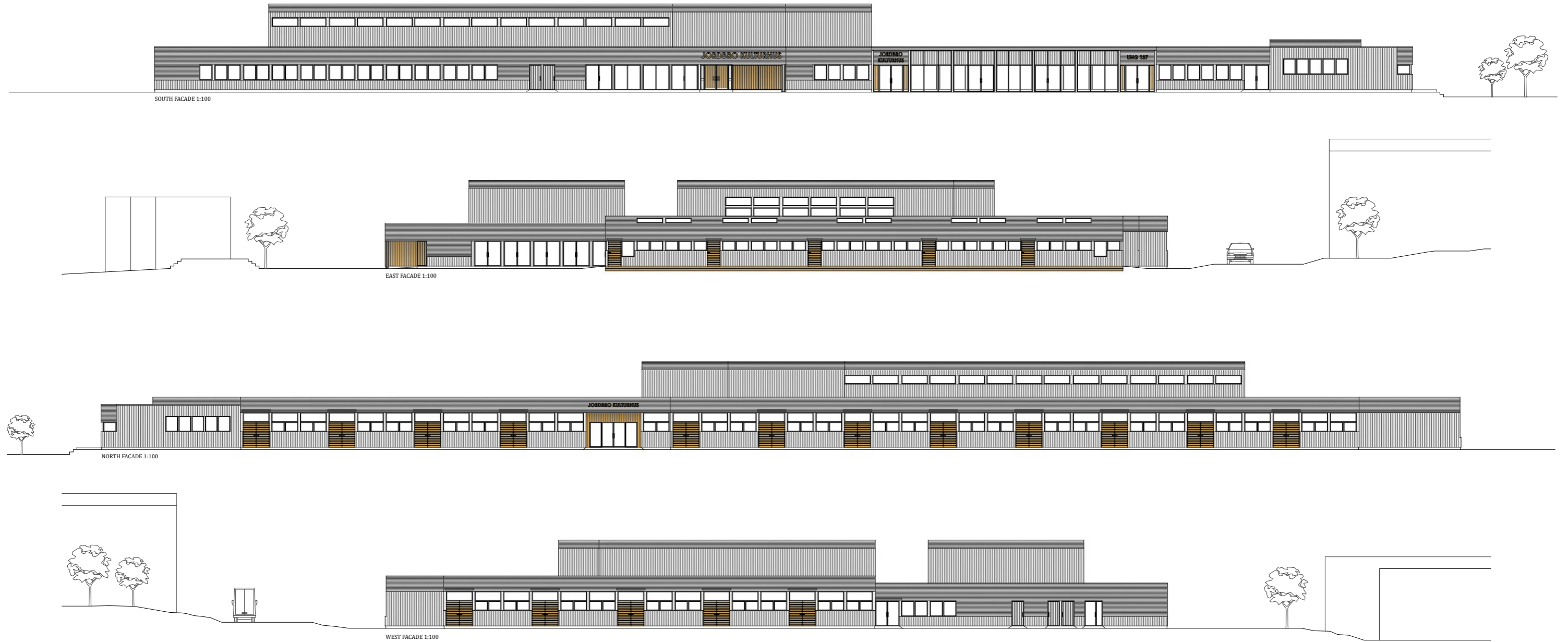
The facade is painted white and the roof is changed to a hidden low leaning roof so the horizontal top of the facade ties the building together as it was originally intended. The new facade symbols a change in the life of the building and gives it a more public appearance. The former school yard is made into an entrance square for the culture house with outdoor activities for the organizations and the youth club. New furniture and street lights are added.



The culture house today.



The school in the 70s.



FACADES 1:300 (Original 1:100)

ECONOMY

Since Jordbro is a socially vulnerable area I have been thinking a lot about how to find an economy in this project. I have been interviewing people who have worked with similar projects, such as the Hub in Hovsjö, and municipal employees who have worked with development plans for Jordbro. That has helped me to decide what to propose in relation to finance that I think could be achieved in the project.

First of all there is an economy in the building itself. It already stands there, it is run down but functioning. The municipality would never put money into building a new culture house of this size, 7000 m², in Jordbro but since they have decided to keep it they are also willing to take care of it. The municipality has decided to put 13 million SEK to change the steep roof which was added on top of the original roof in the 90s. It has been badly taken care of and that has compromised the structure of the building. I see this as an opportunity to give the schools exterior a lift.

In the Hovsjö Hub project, which is a school changed into a public service building, they got EU-grants to adapt the building to the new program. This could be a chance for Jordbro culture house as well. There is also a grant that you can apply for from Boverket, which deals with adaptation of cultural buildings. One of the organizations

at Jordbro culture house called Jordbro Världsorkester is already working on getting everyone together to apply for this grant. This money could then be put into adapting the interior spaces according to the changes I propose in my project.

To continue to keep rent low for the individual workshops I suggest that these spaces interiors are kept as they are. If an organization wants to renovate it they can do it themselves.



Final presentation in the courtyard lab at KTH Arkitektur.

CONCLUSION

With this project I have started to learn how political processes behind decision making of public space can work in a socially vulnerable and segregated area. I have engaged with people on site and used my knowledge as an architect to find durable solutions for the development of a public institution. I hope that my project will help the cultural workers and the municipality to get going in the process towards evolving a vivid culture house in Jordbro that will be rewarding for the area and the whole municipality.